

Beech Fork Lake

Beech Fork Lake Resource Plan

The resource plan for Beech Fork Lake follows the management by area framework.

Table 3-1 provides a summary of the resource plan recommendations and the resource objectives they address for each management area. **Table 3-1** also includes overarching project-level recommendations for the Beech Fork Lake Project that are based on descriptions of the current conditions and management of the project described in **Section 3** and the regional resources objectives described in **Section 2.17**. **Figure 3-1** identifies the location of the management areas at Beech Fork Lake.

Within the project boundary, nine management areas have been identified.

Descriptions of the current land use conditions at each management area and the recommendations for the future use of the areas are provided in the following sections.

Table 0-1. Beech Fork Lake Resource Plan recommendations for USACE management areas

Management Area	Recommendation	Resource Objective
Beech Fork Lake Project	Continue to pursue partnerships with other agencies and organizations for management of existing recreation facilities and development of new recreation opportunities.	RR2, RN4
	Implement an invasive species management plan to control the expansion of these species within project lands.	RN2, N2, N3
	Perform comprehensive surveys for prehistoric and historic cultural resource sites and develop a geospatial database for maintenance of such data.	RC1, C1
Beech Fork Lake	Continue WVDNR's management of the fisheries in Beech Fork Lake with the goal of maintaining healthy and stable populations of native aquatic species, including sports fish.	RN3, RN5, RN6
	Continue USACE's current management of the lake to maintain conditions for safe boating and swimming.	RR1
Dam Site and Spillway	Continue to operate and maintain the dam and outlet structures to meet the authorized project purposes.	RR1
Upstream Recreation Area	Continue to manage the area for the current water-based recreation activities and accommodate future trends in the public's recreation preferences to the extent practicable.	RR1, RR6, RR8, RR9
	Provide signage at the boat launch informing the public of the WV advisories for fish consumption.	RR7
	Explore opportunities for gateway improvements such as adding natural areas (i.e., pollinator habitat).	RN1, RN6
	Repave Beech Fork Road from the project boundary to the parking areas at the marina and boat launch.	R8
Downstream Recreation Area	Enhance the visitor experience based on future analysis and evaluation of circulation and efficiency the area.	R6
Stowers Branch Beach	Perform a land use analysis and evaluate measures for improvements to the management area to improve utilization of the recreation area to improve the user recreation experience.	R6

Management Area	Recommendation	Resource Objective
	Evaluate available options for reducing crime and vandalism.	R3
	Evaluate options for reducing visitors' perception of overcrowding and improving the quality of the recreation experience by visitors.	R4
	Assess options and implement modifications to maintain visibility of the no-wake sign without mowing the surrounding wetland.	RN3, RN6, N5
	Modify the universal access ramp so that it is visible and functional.	RR10
	Evaluate potential options for expanding the trails that originate at Stowers Branch Beach, including multi-use trails.	RR5, R7
Beech Fork USACE Trails and Low-Density Recreation Open Area	Pursue options for expanding the existing trails in the area to include opportunities for multi-use trails.	RR5, R7
	Clear small areas along the lake's shoreline of vegetation so they are accessible by boaters for picnicking and observing nature.	RR1

Sections 2.17 and 3.6 designate a code for each of the regional and project specific resource objectives. The resource objective codes are provided in the last column to identify the resource objective that is addressed by each recommendation.

RR indicates a regional recreation objective; **RN** indicates a regional natural resource objective; and **RC** indicates a regional cultural resources objective. For resource objectives specific to Beech Fork Lake, **R**, **N**, and **C** indicate recreation, natural resource, and cultural resource objectives, respectively.

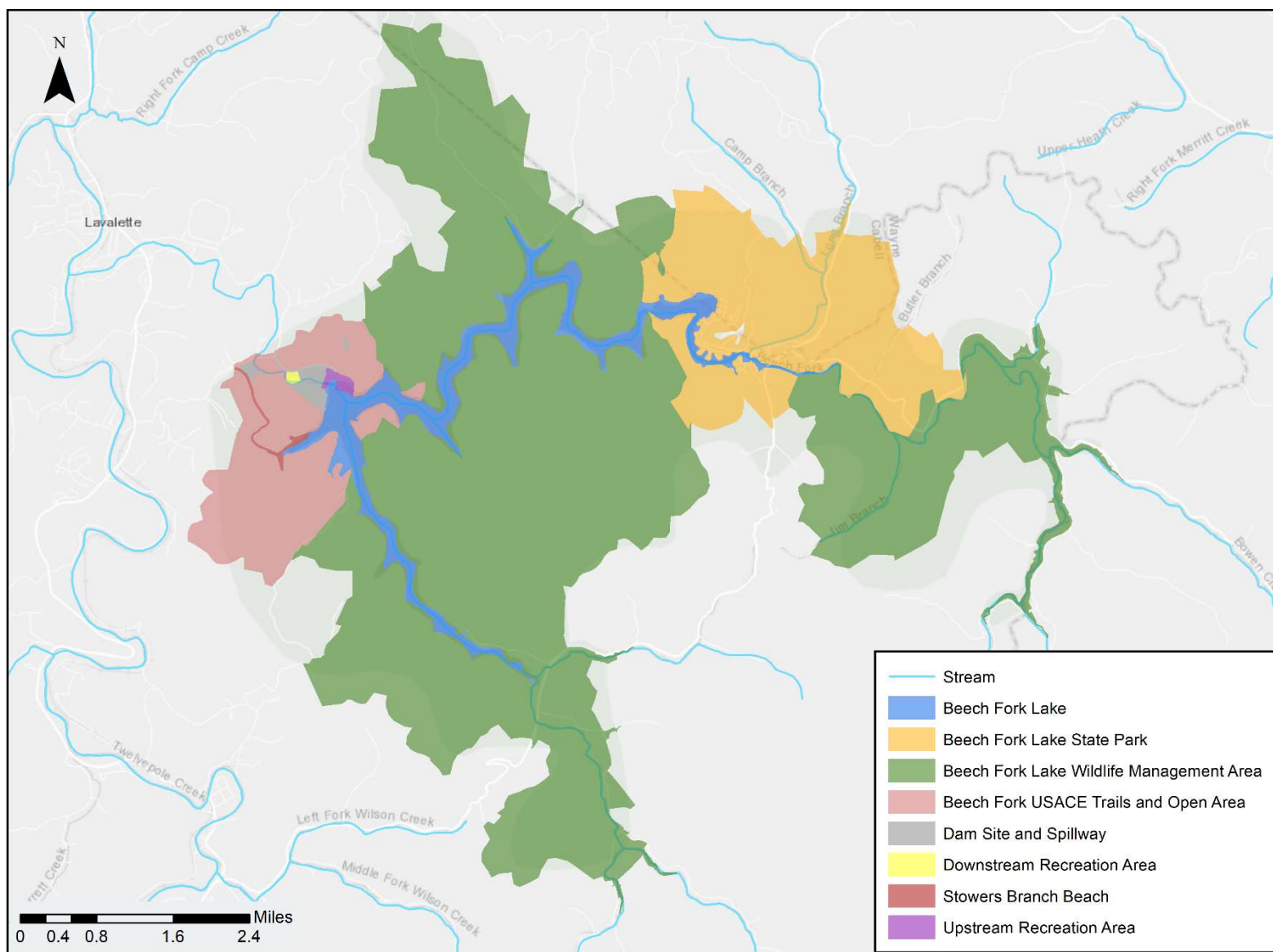


Figure 0-1. Beech Fork Lake Management Areas

Beech Fork Lake

Current Use Condition

Beech Fork Lake is managed by USACE and WVDNR-Wildlife Resources for boating, fishing, swimming, and preservation of a healthy aquatic habitat. USACE places buoys to mark no-wake zones and shallow areas along the shoreline where it is unsafe to boat.

There is a 9.9 horsepower limit for motorized boats using Beech Fork Lake. Pontoon boats and bass boats are the most common types of motorized watercraft but jon boats and houseboats are also seen on the lake. There is a trend of increasing use of the lake by non-motorized watercraft such as kayaks and paddleboards. Fishing and cruising are the most common boating activities.

WVDNR-Wildlife manages the lake's fisheries and is responsible for issuing permits for fishing tournaments. Beech Fork Lake is a popular recreational fishing area and fishing tournaments are held almost every weekend from April through October. Despite heavy fishing pressure, surveys by WVDNR indicate that bass populations have remained stable¹. The lake is stocked with trout once a month from February through May. The featured fish species at Beech Fork Lake is the hybrid striped bass.

Management of the lake by WVDNR-Wildlife Resources includes placement of Christmas trees during winter pool. The trees are anchored along the shoreline so they are submerged during summer pool conditions. This creates good habitat and attracts fish. Native trees along the shoreline are sometimes cut for the same purpose. WVDNR places signs showing where the trees have been placed and posts maps of their locations.

Proposed Future Use

Beech Fork Lake will continue to be managed for authorized project purposes such as recreation which includes fishing, swimming, boating, and fish and wildlife management. The trend toward greater utilization of Beech Fork Lake by non-motorized watercraft is expected to continue in the future. WVDNR-Wildlife will continue management of the fisheries in Beech Fork Lake with the goal of maintaining healthy and stable populations of aquatic species, including sports fish.

Dam Site and Spillway

Current Use Condition

The Dam Site and Spillway Management Area includes the dam, emergency spillway, the maintenance area immediately south of the dam abutment, and the maintenance area below the dam. The maintenance building on the south dam abutment is used for

¹ Personal communication, Jeff Hansbarger, WVDNR-Wildlife Resources Fisheries Biologist, 22 June 2021

maintenance activities, storage, and office space. It is accessible from Beech Fork Road via the road crossing the dam. Solar panels are adjacent to the maintenance building and supplement commercial power for the project. There is another maintenance area below the dam off Beech Fork Road adjacent to the Downstream Recreation Area. The dam is mowed and kept clear of woody vegetation so that boils and upwelling can be observed if they occur.

Proposed Future Use

The Dam Site and Spillway will continue to be managed for operations. Future evaluation of repair strategies for Beech Fork Road is recommended to provide efficient and safe access by operations and maintenance vehicles and visitors. Road repairs will improve visitors' access to the Tailwater Fishing Area, the Upstream Recreation Area, Visitors Center, and the marina.

Upstream Recreation Area

Current Use Condition

The Upstream Recreation Area includes the visitor center/project office and parking area; the boat launch; three parking areas; two shelters, two playgrounds, basketball court, Beech Fork Road from the project boundary to the parking areas at the marina and boat launch, and the discharge channel and a universal access fishing pier adjacent to the boat launch.

The Upstream Recreation Area is managed as a water-based recreation area that provides boating, picnicking, sight-seeing, and other recreation opportunities for visitors. The Visitors Center includes the project offices and offers displays related to local history and wildlife and historical artifacts. Other amenities include public restrooms and a theater.

Beech Fork Road provides access for the Upstream Recreation Area, the Downstream Recreation Area, and the Dam Site and Spillway Management Areas. Project personnel utilize the road for operation and maintenance activities. It is heavily traveled; over 80,000 visitors to the management area use the road each year. This road is currently in poor condition.

Cell phone coverage is reasonably good in the Upstream Recreation Area and throughout much of the project area. Visitor Wi-Fi is also available at the Visitors Center. The Wi-Fi password changes daily but can be provided to visitors by USACE staff.

The management area's three parking areas include spaces for 32 cars at the Visitors Center, spaces for 130 cars and 11 car-trailer combinations at the Marina, and spaces for 60 car-trailer combinations at the boat launch. The parking areas are full or near full most summer weekends although overflow parking is rarely needed.

There is one centrally located restroom that serves the boat launch, marina, and Shelters 1 and 2. Shelter 1 is the most popular of the two shelters. It is east of the marina parking area and is the shortest distance from the restrooms. Users of Shelter 2 often park cars in the car-trailer spots because they are closest to the shelter. However, the car-trailer combination spots are rarely full and are usually available for cars. Parking related conflicts between boaters and picnickers are rare. Both shelters are universally accessible. There are picnic tables located in the areas adjacent to both shelters that get well used.

The boat launch is heavily used by motorized and non-motorized watercraft. It is large with 8-lane paved launching lanes. However, conflicts occur because non-motorized boaters crowd the boat launch and cause delays to motorboat launching.

In the winter, the Upstream Recreation Area has the only operable boat launch. Fishing tournaments are based out of the Upstream Recreation Area almost every weekend from April through October. Participation varies between 20 and 30 boats for each tournament.

The marina is operated by a concessionaire. During the season, almost all slips are rented. The marina also has a store and offers rental of a variety of motorized and non-motorized watercraft.

Proposed Future Use

The proposed future use of the Upstream Recreation Area is to continue management for the current recreation opportunities. To the extent practicable, adjust management to accommodate future trends in the public's preferences for recreation opportunities. It is recommended that signage be placed at the boat launch to inform anglers where information on any WV fish consumption advisories is available.

Future evaluation of repair strategies for Beech Fork Road is recommended to provide efficient and safe access for operations and maintenance vehicles and visitors. Other gateway improvements should be explored such as adding natural areas (i.e., pollinator habitat). Because visitation at the Upstream Recreation Area is high and visitors participate in a variety of recreation activities, alternative layout designs could alleviate current circulation problems and user conflicts. It is recommended that alternatives be developed and evaluated for modification of the Upstream Recreation Area.

Implementation of measures as outlined in the recommended future analysis and evaluation are intended to address user conflict, enhance the circulation, and improve the overall visitor experience in the upstream recreation area.

Downstream Recreation Area

Current Use Condition

The Downstream Recreation Area is managed for picnicking, fishing, and enjoying nature. It consists of Shelters 3 and 4, a restroom, playgrounds at each shelter, and a

paved parking area for about 40 cars. Both shelters are universally accessible. Shelter 3 gets the most use because it is close to the parking area and provides a view of, and access to, the Beech Fork outlet channel. Shelter 4 has a 2-car parking area adjacent to it to facilitate universal access. A long up-hill walk is required to get from Shelter 4 to the restroom. It is also further from the main parking area.

Four benches are placed along the tailwater near Shelter 3. There is also a fishing pier near Shelter 3. A footbridge over a drainage channel and a trail to the bank of the discharge channel provide another fishing location. WVDNR-Wildlife stocks the tailwater with trout each year from February through April.

Proposed Future Use

Management of the Downstream Recreation Area will continue to support of the current recreation opportunities. Recommendations for this management area include enhancing the visitor experience based on future analysis and evaluation of circulation and efficiency the area. Options should be evaluated to increase utilization of Shelter 4, such as improving accessibility and parking.

Stowers Branch Beach

Current Use Condition

This area consists of a picnic area, the swimming beach and the in-lake swimming area, the main parking area, two overflow parking areas, and Stowers Branch Road from the project boundary to the beach.

Stowers Branch Beach is currently managed to support picnicking and swimming beach recreation activities. Visitation at the area is high. It has the only swimming beach available at Beech Fork Lake and is at or close to its carrying capacity for swimming. The water quality has remained good, and the beach has not been closed due to water quality concerns in many years. There is a universal access ramp into the swimming area, but it is not well marked and sedimentation has reduced its depth. As a result, it is not well used.

There are restrooms with outdoor showers and a playground. Three shaded picnic decks are located along the hillside that slopes down to the beach – one is reservable. A paved walkway runs parallel to Stowers Branch connecting the picnic decks.

The main parking lot has 100 spaces that regularly fill on summer weekends. There are five universally accessible parking places. There are two overflow parking areas with an additional 100 spaces. The overflow parking areas used occasionally which requires a long walk to the beach and picnic area. There is no designated parking for USACE or law enforcement vehicles to allow quick access to the swimming and picnic areas when the parking areas are full.

A trailhead for the Beaver Pond Trail (1.3-miles long) and the Twin Coves Trail (1.7-miles long) is located adjacent to the overflow parking area. These trails are interconnected and when combined these trails total a 3-mile loop.

In the vicinity of the swimming beach, buoys have been placed across Stowers Branch to prevent boats from entering the area. However, non-motorized watercraft launch from the shoreline along the parking area and paddle around the swimming area and over the buoys to the open lake.

A “No Wake” sign is posted in a small wetland near the mouth of Stowers Branch. The area around the sign must be mowed periodically so the sign is visible.

Management challenges are mainly related to the heavy use of the area and include complaints of overcrowding, the restrooms and showers are regularly damaged by vandals, disruptive behavior by some visitors, and littering. The area is patrolled by the Wayne County Sheriff regularly. These patrols have reduced but not eliminated vandalism.

Proposed Future Use

The proposed future use of Stowers Branch Beach is to continue management of the area to support improved picnicking, hiking, and swimming beach recreation activities. Perform a land use analysis and evaluate measures for improvements to the management area to improve utilization of the recreation area to improve the user recreation experience.

To address vandalism of the restrooms and showers, a program that discourages vandalism and crime using available approaches such as Crime Prevention Through Environmental Design or a similar program should be pursued.

Evaluate options to reduce or eliminate the need to mow the wetland area to maintain visibility of the no-wake sign. Options should include adjusting mowing schedules, reducing the area mowed, relocating the sign, etc.

Evaluate potential options for expanding the trails that originate at Stowers Branch Beach, including multi-use trails.

Beech Fork USACE Trails and Low-density Recreation Open Area

Current Use Condition

This is the area managed by USACE surrounding the dam site and Stowers Branch Beach. It is managed for hiking, observing nature, and other passive recreation activities and for preservation of fish and wildlife habitat. Trailheads for trails that run through the area are at the spillway, Stowers Branch Beach, and the Visitor Center. Hunting is allowed in the southwestern portion of the area.

There are no places along the lake’s shoreline without dense vegetation where boaters can go ashore and picnic or swim.

Trails are limited to hiking only – no bicycles, horses, or off-road vehicles are allowed. There are three trails: 1) the Rock Hollow Trail is 0.5-miles-long and starts near the Visitors Center; 2) the Spillway Trail is a 1.4-mile-long loop that starts near Shelter 2 at the Upstream Recreation Area; and 3) the Beaver Pond and Twin Coves Trail start at Stowers Branch Beach and connect to form a 3-mile loop that goes through a portion of the WMA (hikers are discouraged from using this trail section during hunting season).

Explore alternatives for gateway improvements such as the addition of naturalized area or pollinator habitat in the open area adjacent to the entrance road.

Proposed Future Use

The proposed future use of this area will continue management for authorized project purposes including the current recreation uses and preservation of fish and wildlife habitat. It is recommended that options for evaluation of expanding the existing trails in the area be pursued to include opportunities for multi-use and other various types of trails. To provide opportunities for picnicking and observing nature, small areas along the shoreline could be cleared of vegetation so they are accessible by boaters.

USACE should perform formal evaluations of drift mines that might be eligible for listing on the National Register. Consideration will be given as to how the significance of historical drift mines could be presented to the public.

Beech Fork Lake State Park

Current Use Condition

WVDNR-Parks manages the area for a variety of water-based recreation activities, including boating, fishing, camping, and hiking and preservation of fish and wildlife habitat. The Park has 275 campsites grouped into four campgrounds, six cabins, a swimming pool complex, picnic shelters, a group shelter, and the Great Blue Heron Water Trail. A description of the four campgrounds and their respective amenities is provided in **Section 3.3.1.5**. The Park has the highest revenue of any park in the WVDNR-Park system. Camping at the park is at or near its carrying capacity. Campers are often unable to reserve campsites.

The State Park is located near the headwaters of the lake in an area where significant sedimentation occurs. As a result, WVDNR-Parks must regularly clear sediment from the boat launch to enable its use. However, sedimentation has now accumulated to the point that navigation is not possible, or is difficult, throughout much of Beech Fork at the State Park. As a result of the reduced water depths, aquatic vegetation has become established which further reduces navigability.

Hunting is not allowed in the State Park. Several trailheads and a parking area are located south of the lake, adjacent to the Moxley Campground. The trailheads provide access to 7 trails with a total length of 13.2 miles. The Mary Davis Trail is the longest (5 miles) and extends from State Park land through a portion of the WMA. The Coal Mine

Trail also extends into the WMA. Hikers are advised to wear blaze orange when hiking during the hunting season. Firearms, bows, and arrows are required to be cased while on State Park lands. Two trails are used by both hikers and bikers.

One log structure has been moved to the camping area and is being managed by Beech Fork State Park staff. Recommendations have been made that an official Determination of Eligibility for the NRHP be made for the log structure, though its movement from its original location may prove to be a designation impediment.

Proposed Future Use

The proposed future use of the Beech Fork State Park is to continue management of the area for the existing recreation activities and stewardship of fish and wildlife habitat. The proposed future use could include additional recreational amenities such as cabins or campsites to meet user demand and provide greater access to visitors. Any future proposals would go through the USACE Report of Availability (ROA) process for outgranted lands.

Current proposed future uses that the State Park is preparing to implement include improvements to the fitness trail and the Great Blue Heron kayak launch. The park has received grants to pave 1.1 miles of the fitness trail and improve the kayak launch and upgrade the access, parking, and interpretive signage for the Great Blue Heron Water Trail. The State Park has received a grant to relocate a portion of the Mary Davis Trail away from hunting areas in WMA and private property.

To improve navigability at the State Park and allow for visitors to moor their boats at campsites as the original design intended, WVDNR-Parks is planning to dredge sediment around the campground.

A CRMP was prepared for Beech Fork Lake in 2001. It recommended that a log cabin that was relocated to the State Park be evaluated for eligibility for listing in the National Register. It is recommended that a formal evaluation be conducted of the log cabin for National Register listing to determine its NR eligibility status.

Beech Fork Lake Wildlife Management Area

Current Use Condition

WVDNR-Wildlife's primary goals for management of the Beech Fork Lake WMA are:

1. To protect and enhance wildlife habitat to provide maximum hunting, trapping, and non-consumptive recreational opportunities which are compatible with the habitat.
2. Manage wildlife populations for hunting, trapping and non-consumptive recreational opportunities.
3. Reduce illegal use of ATV's/ORV's on the management area which destroys and degrades habitat for wildlife as well as having a negative impact on hunting, trapping, and non-consumptive recreational opportunities.

4. Continue public information efforts to facilitate management of the area.

The Beech Fork Lake WMA includes the following facilities: headquarters, gas shed, storage building, shooting range, roads and trails, and parking areas.

Hunting and fishing are the primary recreation activities at the WMA. There are 10 parking areas for hunter access in the WMA, as well as 20 miles of hunter access trails and roads. These roads and trails are maintained by the area manager and various utility companies.

Timber management is an important management tool to maintain good quality habitat. WVDNR-Wildlife prepares a timber management plan each year and submits it to USACE. Proceeds from timber harvests are required to be invested in management and development of the WMA. Beech Fork Lake WMA is a heavily forested area and therefore management efforts are directed toward forest game species such as wild turkey, gray squirrel, and ruffed grouse. Under the featured species management approach, the majority of the area will be managed for the white-tailed deer, specifically older aged deer management. It is illegal for hunters to take deer with antler spreads of less than 14 inches.

Miller's Pond, a 13-acre open water reservoir, is located in the WMA and is open to the general public for fishing year-round with the exception of 1 March to 31 May. During this period, Miller's Pond is only open for handicapped and class Q fishing. The pond is stocked with trout once during the first week of March. There is a catch and release policy for bass. A universally accessible fishing pier is open to the public year-round.

The 100-yard shooting range located in the WMA is a popular attraction, especially during the summer and fall months. The range is open year-round, 7 days/week from 9:00 a.m. to sunset. It is equipped with 8 covered shooting benches. Earthen backstops with target holders are located at 25, 50 and 100 yards. The range shelter is universally accessible by way of a concrete walkway to a multi-purpose shooting bench.

Beech Fork Lake WMA has one natural gas wells located on project lands. The WVDNR also subleases 92 acres to local farmers for hay and grain production on the area.

Proposed Future Use

The proposed future use for the WMA is to continue management of the WMA for the protection and enhancement of fish and wildlife habitat and to support use of the area for hunting and fishing. Continue current management practices to maintain the shooting range as a popular attraction for visitors.

East Lynn Lake

East Lynn Lake Resource Plan

The resource plan for East Lynn Lake follows the management by area framework. Within the project boundary, eleven management areas have been identified and are described below. **Table 4-2** provides a summary of the resource plan recommendations and the resource objectives that they address for each management area. Additionally, **Table 4-1** includes over-arching project-level recommendations for the East Lynn Lake Project that are based on descriptions of the current conditions and management of the project described in **Section 4** and the regional resources objectives provided in **Section 2.17**.

Figure 4-1 identifies the location of the management areas at East Lynn Lake. Descriptions of the current land use conditions at each management area and the recommendations for the future use of the areas are provided in the following sections.

Table 5.2. Resource Plan recommendations by management area

Management Area	Recommendation	Resource Objective
East Lynn Lake Project	Continue to pursue partnerships with other agencies and organizations for management of existing recreation facilities and development of new recreation opportunities.	RR1, RR2, RN4
	Implement an invasive species management plan to control the expansion of these species within project lands.	RN2, N2, N3
	Perform comprehensive surveys for prehistoric and historic cultural resource sites and develop a geospatial database for maintenance of such data.	RC1, C1
East Lynn Lake	Continue WVDNR's management of the fisheries in East Lynn Lake with the goal of maintaining healthy and stable populations of native aquatic species, including sports fish.	RN6
	USACE should continue to work with WVDNR-Wildlife to investigate and implement more permanent fish habitat.	RR1, RN6
	Investigate and implement cost-effective options for reducing trash being flushed into the lake. If necessary, identify alternative funding sources or partnerships.	R6
	Evaluate broad alternatives for addressing sedimentation problem areas, including, including consideration of comprehensive sediment removal, boat launch relocation, etc.	R8
	USACE should continue to identify and pursue methods for informing potential visitors of the recreation opportunities that are offered at East Lynn Lake to increase overall visitation.	RR3, RR11 R1
Dam Site and Project Office	Investigate options for improving communications for operations and maintenance activities.	RR1
	Convert the old residence building to office space if needed in the future.	RR1
Dam Overlook	Continue current management of the site to provide visitors with a scenic overlook of the dam and lake.	RR1
Tailwater Fishing Area	Replace the playground with upgraded equipment to increase its utilization by local residents and visitors to East Lynn Lake.	R9

Management Area	Recommendation	Resource Objective
	USACE should continue to pursue opportunities to inform the public of the recreation opportunities that are available at this site to increase its utilization.	RR3, RR11 R1
Overlook Recreation Area	Pursue partnerships with others to accommodate future recreation trends.	RR8, RR9
	Improve the existing walkway to provide a paved one-lane roadway from the parking area to Shelter 1.	R4
	Assess the advisability of adding another shelter to better meet the high demand.	R9
	Expansion of the playground could benefit users of the area and the recommendation of replacement of the mulch with a permanent pad would reduce maintenance.	RR1, RR6
	Evaluate measures to increase public safety when utilizing sports fields in this management area.	R9
	Signage should be added to notify anglers of the statewide fish consumption advisories.	RR7
Laurel Creek Fishing Area	The existing unpaved parking area should be paved with a section of pavement extending to near the East Fork to provide access for stocking trucks. A restroom should also be added for anglers using the area.	RR1, RR6, R9
	Provide signage at the parking area informing the public of the WV advisories for fish consumption.	RR7
East Lynn Lake Trails and Low-density Recreation Open Lands	USACE should continue to pursue opportunities to inform the public of the recreation opportunities that are available at this site to increase its utilization.	RR3, RR11 R1
	Pursue opportunities to expand the trail system for hiking and other uses.	RR5
	Monitor invasive species and implement a control program to protect the quality of the native habitat.	RN2, RN3, N2, N3
East Fork Area	USACE should continue to pursue opportunities to inform the public of the recreation opportunities that are available at this site to increase its utilization.	RR3, R1
	To provide cost effective maintenance of boat launches, an assessment should be performed to identify options to address the accumulation of sediment.	R7, R8
	Construct a pavilion for shade and a restroom at the East Fork Swimming Beach.	RR6

Management Area	Recommendation	Resource Objective
	Add a shelter and playground at the East Fork Boat Launch to attract more visitors.	RR6
	Upgrade campsite electric hookups from 30-amps to 50-amps where needed at the East Fork Campground.	RR6, R3
	Evaluate the adequacy of existing campsite pads and make improvements where needed to better accommodate modern recreation vehicles.	RR6, R3
	Add an additional dump station at the East Fork Campground in the vicinity of Areas 4 or 5.	RR6, R3
	Upgrade the playground at East Fork Campground.	RR6
	Add a shelter at the East Fork Campground just before the campground entrance.	RR6
	The Wi-Fi should be upgraded at the East Fork Campground to provide more reliable service.	RR1, RR6, R10
	East Fork Road should be resurfaced from Route 37 to Area 6 of the East Fork Campground.	RR6, R9
	Pursue options to add a boat launch for non-motorized watercraft at a location on East Fork Road.	RR8, R7
Lick Creek Area	Close the shelter, playground, and restroom.	RR1, RR4, R9
	Provide signage at the boat launch informing the public of the WV advisories for fish consumption.	RR7
Lakeside Area	Add a playground or water park fountain in the picnic area.	RR1, R5
	USACE should continue to pursue opportunities to inform the public of the recreation opportunities that are available at this site to increase its utilization.	RR3, RR11 R1

Sections 2.17 and 4.6 designate a code for each of the regional and project specific resource objectives. The resource objective codes are provided in the last column to identify the resource objective that is addressed by each recommendation.

RR indicates a regional recreation objective; **RN** indicates a regional natural resource objective; and **RC** indicates a regional cultural resources objective. For resource objectives specific to Beech Fork Lake, **R**, **N**, and **C** indicate recreation, natural resource, and cultural resource objectives, respectively.

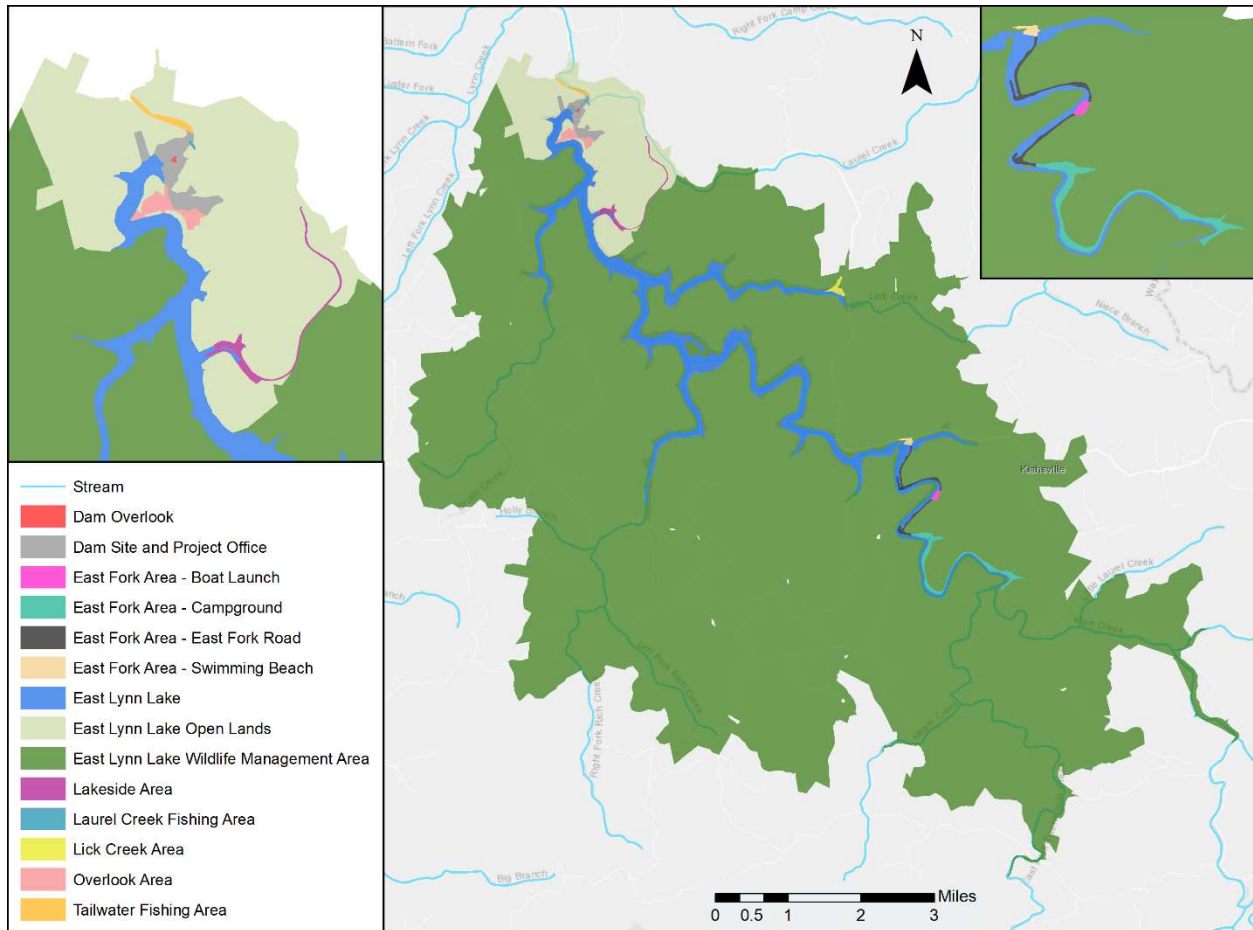


Figure 0-1. East Lynn Lake Management Areas

East Lynn Lake

Current Use Condition

East Lynn Lake is currently managed to support water-based recreation activities such as boating, fishing, and swimming and to preserve a healthy aquatic habitat for native species, including sport fish species. Fishing success in East Lynn Lake is good. The PSD is 60 at East Lynn Lake compared to less than 50 for Beech Fork Lake.

There are no horsepower restrictions for motorboats at East Lynn Lake. Recreation activities on the lake include motorized and non-motorized boating, swimming, and fishing. Water skiing and tubing are activities that are also seen occasionally on East Lynn Lake. The most common types of motorboats that use the lake are bass boats and pontoon boats although jon boats, houseboats, and jet skis are also seen. Non-motorized watercraft such as kayaks, canoes, and paddle boards using the lake have increased in the last decade and are continuing to increase. USACE places buoys to mark no-wake zones, restricted areas, and shallow areas along the lake's shoreline.

WVDNR-Wildlife manages the lake's aquatic resources. They create fish habitat by anchoring submerged Christmas trees and native shoreline trees just below the water surface to attract fish. The locations of the submerged trees are marked with signage and are shown on maps posted by WVDNR. The trees sometimes become detached from the anchors and float in the lake, creating obstacles. WVDNR also permits fishing tournaments, which are common on the weekend throughout the recreation season. WVDNR-Wildlife's featured fish species at East Lynn Lake is muskie.

Garbage collection service is not provided in the rural portions of the counties surrounding East Lynn Lake. Some residents illegally dump trash in ravines and along hillsides. During large storm events, trash is flushed into tributaries by stormwater runoff which carries it downstream where it collects in East Lynn Lake. Cove Creek and the East Fork are the largest sources of trash entering the lake.

Sedimentation is problematic at the mouths of tributaries and in the upstream reaches of East Lynn Lake. Boat launches must be cleared of sediment periodically to remain functional.

East Lynn Lake is a relatively large lake in an attractive natural setting and provides a variety of water-based recreation opportunities. Its relatively low use may be at least partially the result of a lack of awareness of the opportunities the lake offers.

Proposed Future Use

Continue and improve USACE and WVDNR-Wildlife management of the lake for preservation of aquatic habitat and to provide safe boating, fishing, and swimming opportunities for visitors. Recommendations are made to support management of the area including continued collaboration with partners to review and improve Christmas tree anchoring systems and/or creating more permanent fish habitat.

Possible methods of reducing the volume of trash that is washed into the lake should be evaluated to identify the most cost-effective approach. This will provide improved boating safety, allow visitors to experience a more pristine setting, and reduce the risk of environmental contamination of the lake.

An evaluate broad alternatives to address large scale sedimentation issues that have been identified throughout the lake is recommended. Consideration should be given to comprehensive sediment removal or boat launch relocation.

USACE should identify and pursue methods for informing potential visitors of the recreation opportunities that are offered at East Lynn Lake to increase overall visitation.

Dam Site and Project Office

Current Use Condition

The Dam Site and Project Office area consists of the dam, the emergency spillway, the inlet structure, the office, maintenance sheds, and the old residence. This area is

currently used to provide administrative office space and for operations and maintenance activities. The office is located above the dam. There is a paved visitor parking area for seven cars in front of the office, including one universally accessible space. The office includes space for both administrative and maintenance activities. The old residence is currently being used for storage.

There is limited cell phone service at the project, radio communication is the best method for operations personnel.

Proposed Future Use

The proposed future use of the Dam Site and Project Office is for continued management for operations and maintenance project purposes. Radio and cell phone communications are currently limited within the area and evaluation of effective means of communications to support operations personnel is recommended. Improved communications will increase the efficiency and effectiveness of operations and maintenance activities, reporting illegal activities, and notifying emergency services after accidents.

The old residence facility provides the flexibility to be utilized for offices, meeting rooms, or storage space as management needs change in the future.

Dam Overlook

Current Use Condition

The overlook is currently managed as a high-density recreation area that provides a scenic view of the lake and dam. The overlook has eight paved parking spaces, picnic tables, and a walkway with fencing around its perimeter.

Proposed Future Use

Continue the current management of the site to provide visitors with a scenic overlook of the dam and lake.

Overlook Recreation Area

Current Use Condition

The Overlook Area is on the lake's shoreline about 0.2-miles south of the project office. The lake makes a sharp turn, creating a peninsula that provides the Overlook Recreation Area with a 180-degree view of the lake. The recreation area has paved parking for 37 cars, including two handicapped parking places, two shelters, restrooms, basketball and volleyball courts, baseball field, and a playground. The area is a popular venue for large gatherings such as weddings and family reunions. Two ponds in the area provide good fishing. A large flat field includes a baseball field and is also used for a variety of recreation activities

Shelter 1 is a long distance from the parking area and must be accessed by foot. A paved walkway is provided but it is a long distance for visitors to carry picnic supplies from the parking area to the shelter. Shelter 2 is close to the parking area and the restroom. The shelters can be reserved on weekends but not during the week. Both shelters are very well used. A third, smaller shelter is available on a first-come-first-serve basis.

The playground is popular. It has a mulch surface that requires significant maintenance.

Proposed Future Use

The proposed future use of the area is to continue its current management as a high-density recreation area that provides picnicking, sightseeing, and sports opportunities and seek opportunities to provide enhanced recreational amenities. Pursue partnerships with others to accommodate future recreation trends. Such partnerships enable USACE to leverage its resources to provide a greater variety and quantity of recreational opportunities on project lands.

Recommendations include expansion of the existing playground and improving the existing walkway to provide a paved one-lane roadway from the parking area to Shelter 1. An evaluation of the size and shape of this roadway should be conducted prior to implementation to facilitate convenient use of Shelter 1 and increase its utilization.

High utilization of the existing shelters suggests the need for another shelter within the management area. An evaluation of current occupancy rates of the existing shelters should be conducted to assess whether the addition of another shelter is warranted. The objective of the evaluation would be to provide picnicking facilities that are commensurate with the demand.

Evaluate measures to increase public safety when utilizing sports fields in this management area.

Signage should be added to inform anglers of the state's fish consumption advisories.

Tailwater Fishing Area

Current Use Condition

This area stretches about 0.4-mile along the south side of the East Fork of Twelvepole Creek below the dam. It is accessed from East Lynn Road by Spillway Road. The area is currently managed as a water-based recreation area with opportunities for fishing and picnicking. The area has paved parking for 28 cars including one universally accessible space, restrooms, and a shelter and playground. The playground is close to the project entrance in an easily accessible location; however, the playground is currently in poor condition. It is likely that the playground's poor condition has contributed to its low utilization by nearby residents. The facilities at this recreation area are adequate to accommodate more visitors than are currently utilizing the area.

Proposed Future Use

The proposed future use of the Tailwater Fishing Area is to continue providing the current opportunities for fishing and picnicking. Given the additional capacity for visitors at the area, pursue opportunities to inform the public of the recreation opportunities that are available at this site to increase utilization. Replacement of the playground with upgraded equipment would provide an incentive for increased use by families from local communities and visitors to East Lynn Lake.

Laurel Creek Fishing Area

Current Use Condition

The Laurel Creek Fishing Area is below the dam on the East Fork of Twelvepole Creek near its confluence with Laurel Creek. The Laurel Creek Fishing Access Road provides access to the area. The area is currently managed as a low-density recreation area that provides fishing opportunities at the tailwaters of the dam. There is a small unpaved parking area, and anglers fish from the shoreline along the East Fork. WVDNR-Wildlife uses this area for their seasonal trout stocking. Without any pavement, stocking trucks sometimes have difficulty accessing Laurel Creek.

Proposed Future Use

The proposed future use of the area is to convert the area to a high-density recreation area to facilitate trout stocking and improve conditions for fishing. The existing unpaved parking area could be paved with a section of pavement extending to near the East Fork to provide access for stocking trucks. Adding a restroom for recreational users should be evaluated.

East Lynn Lake Trails and Low-density Recreation Open Lands

Current Use Condition

This area consists of the USACE managed lands classified as Low-density Recreation surrounding the Tailwater Area, the dam site, the Overlook Area, and the Lakeside Area. It is managed as a Multiple Resource Management area that provides opportunities for hiking, other passive recreation activities, and hunting, as well as preservation of fish and wildlife habitat. There are trailheads for hiking trails through this area at the dam site, the Tailwater Fishing Area, and Lakeside Area. Hunting is allowed in the southwestern portion of the area that is south of Stowers Branch Road and Stowers Branch. Hunting is prohibited in the remainder of the management area. Currently, there are several oil and gas wells on project lands.

Proposed Future Use

The proposed future use of the area is to continue its management for the recreation and preservation of fish and wildlife habitat and evaluate opportunities for enhancement of the area. Opportunities for expanding the trail system should be sought. It is

recommended that USACE should pursue opportunities to inform the public of the hiking and hunting opportunities that are available at this site to increase utilization of the Low Density Recreation Area.

East Fork Area

The East Fork Area consists of a continuous narrow strip of land along the east bank of East Fork that begins at the intersection of East Fork Road and Route 37. It includes the Swimming Beach, Boat Launch, Campground, and East Fork Road which connects all these areas. The East Fork portion of the lake is a designated no-wake zone throughout the entire length of the Management Area.

East Fork Swimming Beach

Current Use Condition

The East Fork Swimming Area is located on East Fork Road near its intersection with Route 37. It is managed as a high-density recreation area that provides recreation opportunities that are limited to swimming. There is paved parking for approximately 18 cars and a sand beach. Buoys define the swimming area. There are no restrooms, showers, or picnic tables and there is no shade.

Proposed Future Use

The proposed future use of the East Fork Swimming Beach is to improve the current opportunities provided and to make the area more attractive to visitors. The swimming beach is underutilized even though it is near the East Fork Campground which is the most popular recreation area at the East Lynn Lake Project. The addition of shade structures, restrooms and showers would make this area more attractive to visitors and would increase utilization of the area. USACE should pursue opportunities to inform the public of the recreation opportunities that are available at this site to increase its utilization.

East Fork Boat Launch

Current Use Condition

The East Fork Boat Launch is on East Fork Road 1.1 miles south of the East Fork Swimming Beach. The area is currently managed as a high-density recreation area that provides fishing, boating, and picnicking opportunities. There is a paved parking area for 30 car-trailer combinations and 15 cars. There is a two-lane boat launch, restrooms, picnic tables, and a fishing pier. The setting for the area is attractive, well drained, and does not flood often. As a result, it is sometimes used for large events such as weddings even though there is no shelter available.

Proposed Future Use

It is recommended a comprehensive evaluation for the East Fork Boat Launch and day use area be conducted to provide more opportunities for visitors and to optimize the space available. Potential upgrades that could be included in the evaluation are the

addition of a shelter and playground to enhance recreation opportunities and attract more visitors. This would be accomplished in conjunction with partially shutting down the Lick Creek Area. Operation and maintenance needs would be reduced at the underutilized Lick Creek Area and would allow an upgrade to the East Fork Boat Launch Area which is well utilized. USACE should pursue opportunities to inform the public of the recreation opportunities that are available at this site to increase its utilization.

East Fork Campground

Current Use Condition

The entrance to the East Fork Campground is on East Fork Road about 0.75-miles south of the East Fork Boat Launch. The area is managed to provide camping, boating, and fishing recreation opportunities. There are 167 campsites grouped into six areas. The camping areas extend approximately 2 miles from Area 1 at the entrance to Area 6. There is no shelter in this area.

The trailhead for the East Fork Hiking Trail, the camp store, and the playground are between Areas 1 and 2. The trail is about 2-miles-long. The playground needs updating.

The campground is managed, and fees are collected by USACE. A concessionaire operates the camp store which offers supplies and rental equipment, as well as offering Wi-Fi to campers for a fee. However, the Wi-Fi is not reliable and when internet access not available, arriving visitors cannot be checked in and credit card payments cannot be processed.

Campsites in Areas 1 through 4 can be reserved and campsites in Areas 5 and 6 are available on a first-come-first-serve basis. All campsites have water. 50-amp electric hookups are provided in Areas 5 and 6 and in a portion of Area 3. The remaining campsites have 30-amp hookups. The existing facilities at many East Fork campsites do not fully accommodate modern recreational preferences and equipment. For example, the power requirements of RVs sometimes exceed the ability of the campground facilities, and the area will lose power.

Boat launches are provided in Areas 2 and 5. Due to the sedimentation in the upstream reaches of the East Fork it is necessary to dredge the launches periodically to maintain optimal access. Bank erosion in some areas is encroaching on campsites.

The campground has one dump station near the entrance which is heavily utilized during camper checkout times. The dump station is 2 miles from Area 6. Campers transport portable tanks back and forth between the dump station and their campsites, creating additional traffic on the two -lane road.

Proposed Future Use

The proposed future use of the East Fork Campground is to continue to providing camping to the public and explore opportunities for improvement to the current recreational uses. An evaluation of the adequacy of existing campsites should be conducted, and improvements implemented where needed to better accommodate modern recreation vehicles. Recommendations for the East Fork Campground area include upgrading all campsite electric hookups to 50-amps to provide safer and more reliable power, adding a dump station in the vicinity of Areas 4 or 5, upgrades to the playground facilities and Wi-Fi upgrades to provide more reliable service. In the interest of cost-effective maintenance of boat launches, an assessment should be performed to identify options to address the accumulation of sediment. Options to be considered should include relocating boat launches.

East Fork Road

Current Use Condition

East Fork Road is approximately four miles long from its intersection with Route 37 to Area 6 in the East Fork Campground. It provides access to all three recreation sites in the East Fork Area; the swim beach, boat launch, and campground. It is a two-lane paved road that meanders along the shoreline of the East Fork. Roughly a third of all visitors to East Lynn Lake travel on East Fork Road each year. The road is in poor condition and requires frequent maintenance.

Because the East Fork is a dedicated no-wake zone the entire length of the East Fork Area, it is a popular area for non-motorized watercraft. However, there is no boat launch dedicated to non-motorized watercraft in the East Fork Area or elsewhere at East Lynn Lake.

Proposed Future Use

East Fork Road will continue to be managed to provide access to the recreation sites in the East Fork Area. Because there are no picnic facilities in the southern portion of East Fork Road, a new shelter is recommended to be located along the East Fork shoreline just before the campground entrance.

An evaluation of overall maintenance needs and repair should be conducted on East Fork Road from Route 37 to Area 6 of the campground to allow for reliable access. Evaluate and identify an appropriate site and pursue options to add a boat launch for non-motorized watercraft along East Fork Road.

Lick Creek Area

Current Use Condition

The Lick Creek Area is on Lick Creek, a major tributary to the East Lynn Lake, located directly off Route 37. The Lick Creek Area is currently managed as high-density recreation that provides opportunities for boating, fishing, and picnicking. The area has paved parking for 46 car-trailer combinations, a two-lane paved boat launch, restrooms,

a playground, a shelter, a trailhead, a fishing pier, and picnic tables. Lick Creek is a designated no-wake zone from its confluence with the East Fork to the Lick Creek Area.

Visitation to Lick Creek is low, only about 3% of the total annual visitation to East Lynn Lake. The playground is in poor condition being situated in a low area that remains wet much of the time. Overall, poor drainage from the area increases maintenance requirements for the area.

Proposed Future Use

The proposed future use of the area is to continue its management as a high-density recreation area but to reduce the recreation opportunities to boating and fishing. The boat launch and fishing pier will remain in operation. In light of the high maintenance requirements and low utilization of the area, it is recommended that the shelter, playground, and restroom be closed and no longer maintained.

Lakeside Area

Current Use Condition

The Lakeside Area is at the mouth of Bartram Branch, 0.8 miles south of the Overlook Area. Lakeside Marina Road provides access from Route 37. It is currently managed to provide fishing, boating, and picnicking opportunities to visitors. The area includes Lakeside Marina Drive, the marina, paved parking for 180 car-trailer combinations, a four-lane boat launch, and a day use area. The marina has 134 slips and is operated by a commercial concessionaire.

The day use area includes, a small shelter, picnic tables, paved parking for 20 cars, restroom, and a trailhead for the 1.5-mile-long East Fork Trail. This area is also used as an undesignated swimming area which is a public safety issue because of its proximity to the marina.

Proposed Future Use

The proposed future use of this area is to continue current use and improve its management to provide recreation opportunities. Recommendations for additional recreational opportunities include the addition of a playground or interactive water feature.

East Lynn Lake Wildlife Management Area

Current Use Condition

WVDNR manages the East Lynn Lake WMA based on the following management goals:

1. To protect and enhance wildlife habitat to provide maximum hunting, trapping, and non-consumptive recreational opportunities which are compatible with the habitat.

2. Manage wildlife populations for hunting, trapping and non-consumptive recreational opportunities.
3. Reduce illegal use of ATVs/ORVs on the management area.
4. Continue public information efforts to facilitate management of the area.

Hunting and fishing are the primary recreation activities conducted in the East Lynn Lake WMA. The rifle deer season and spring turkey season are the most popular hunting seasons. East Lynn Lake WMA is a heavily forested area and therefore management efforts are directed toward forest game species such as the wild turkey, gray squirrel, and ruffed grouse.

There are 56 miles of unimproved roads in the WMA. These roads are maintained cooperatively between the WVDNR, USACE, WVDOT and several utility companies. There are about 15 miles of hunter access trails behind locked gates located on the management area. The unimproved roads provides access to illegal off-road vehicles to congregate in the WMA. Illegal use causes damage to the backcountry areas by creating ruts, destroying native vegetation, and contributing to erosion. This activity also disturbs hunters using the area. USACE and WVDNR patrol the backcountry on a regularly basis in the summer however budget constraints limit the ability of both agencies to prevent all illegal off-road activities in the area.

According to the WMA lease agreement, WVDNR submits an annual timber management plan to USACE. The goal of timber management is to maintain good quality wildlife habitat. The proceeds from timber harvests are to be used for maintenance and development of the East Lynn WMA.

East Lynn Lake WMA has numerous oil and natural gas production sites on the property. These leases have been established with USACE. In addition, the WVDNR allows 8 acres to be sharecropped by local farmers for the purpose of hay and grain production.

Proposed Future Use

The East Lynn Lake WMA will continue to be managed to provide preservation of fish and wildlife habitat, hunting, and fishing. USACE and WVDNR-Wildlife will continue to collaborate and explore new methods for controlling illegal off-road vehicle access. To protect the quality of the area's fish and wildlife habitat, new oil, gas, and mining activities should be prohibited in the area.

In cooperation with WVDOT, the Hatfield McCoy Trail Association proposed a plan to expand the Hatfield McCoy Trail system into a portion of the East Lynn Lake WMA. However, the Hatfield and McCoy Trial Association has now withdrawn the proposal, additional information can be found in **Section 5**, Special Topics.