

# BEECH FORK AND EAST LYNN LAKES REGIONAL MASTER PLAN

## PUBLIC INVOLVEMENT MEETING

US Army Corps of Engineers  
Huntington District  
Great Lakes and Ohio River Division  
October 5, 2021



US Army Corps  
of Engineers



Beech Fork Lake



East Lynn Lake

# Virtual Public Meeting for Beech Fork & East Lynn Lake Master Plan

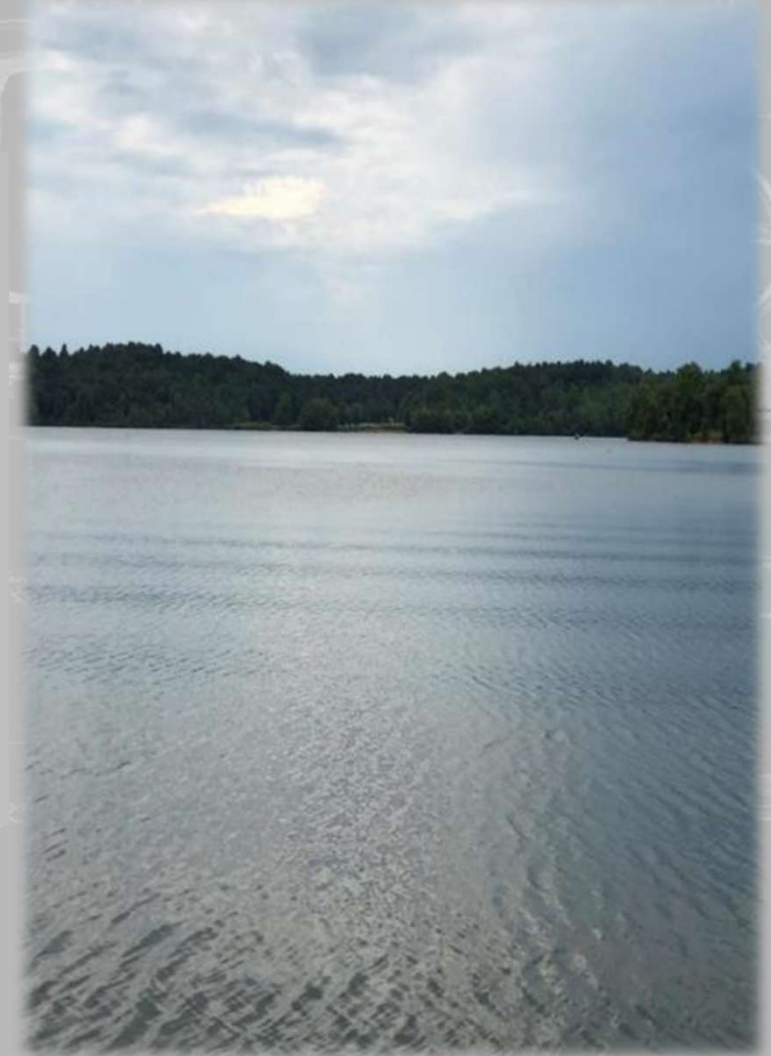
- All lines will be muted during the presentation
- Use the “chat” feature at the bottom of the screen to make comments.
- Questions in the chat box will be addressed after the presentation
- After the presentation, you can unmute yourself by pressing \*6 and make a statement or ask a question.
- Your flexibility, patience, and cooperation are appreciated.
- This presentation is being recorded



US Army Corps  
of Engineers

# Meeting Goals

- Define a Master Plan
- Describe the framework of a Regional Master Plan
- Describe the Master Plan process
- Review preliminary objectives
- Review preliminary recommendations
- Allow opportunities for public comment
- Describe additional opportunities for public input



US Army Corps  
of Engineers



# WHAT IS A MASTER PLAN?

- A 25-year comprehensive land use management guide for recreational, natural, and cultural resources
- Develop Resource Management Objectives
- Identify Land Use Classifications
- Adheres to Federal laws, including the National Environmental Policy Act (NEPA)
- Stakeholder and public involvement is key to a successful master plan
- These two lakes will be combined into a Regional Master Plan which introduces the region as a whole and provides a collective vision for the future.



US Army Corps  
of Engineers



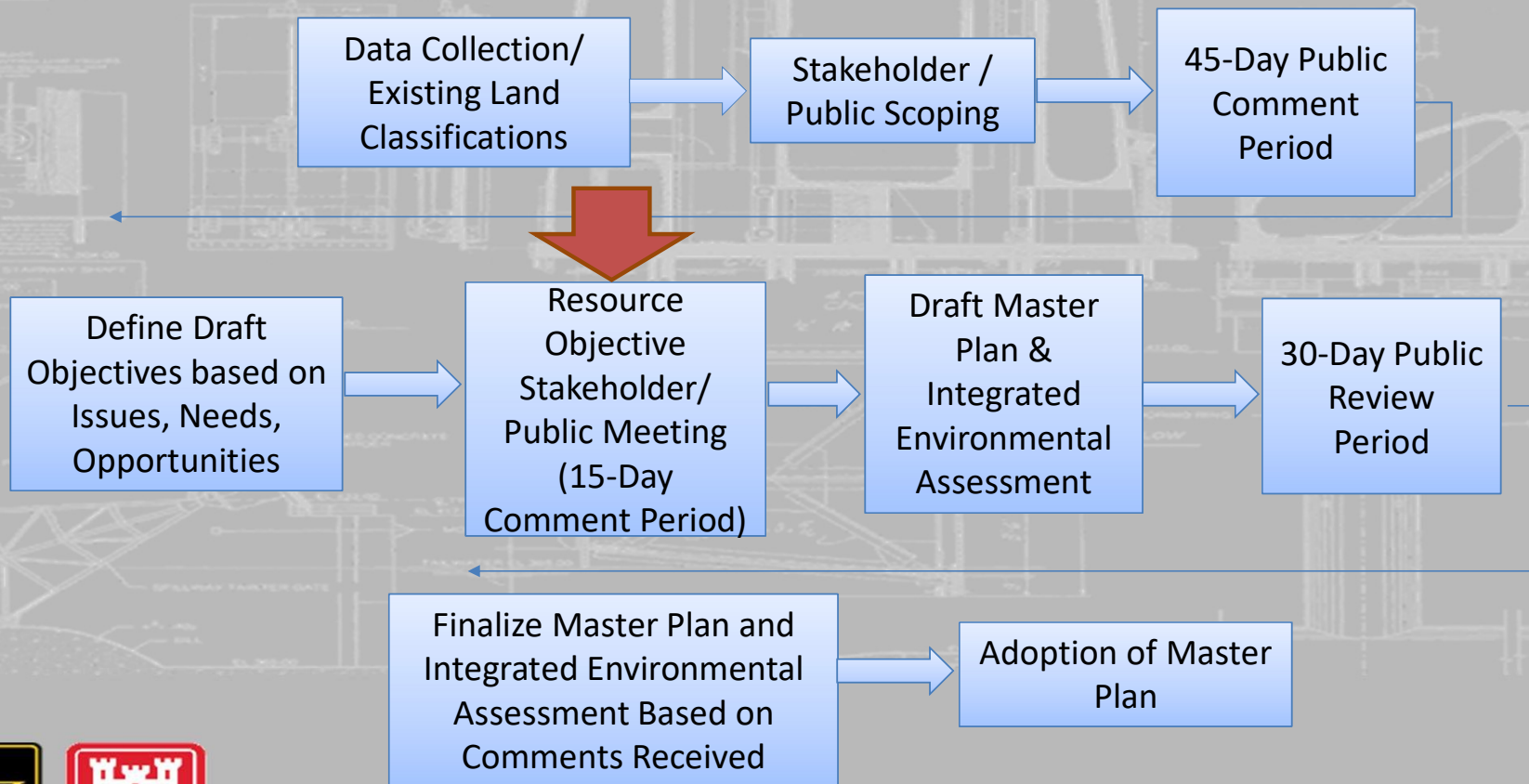
# WHAT IS NOT PART OF A MASTER PLAN?

- Facility design details
- Details of daily project operation
- Operational or technical aspects of:
  - Water management for flood risk management
  - Regional water quality
  - Water supply
  - Shoreline management
  - Water level management



US Army Corps  
of Engineers

# THE MASTER PLAN PROCESS?



US Army Corps  
of Engineers

# BEECH FORK LAKE OVERVIEW

## Description

- Operation of Beech Fork began in May 1978 and authorized purposes include
  - Flood Control
  - Recreation
  - Fish & Wildlife Enhancement
- Corps owns 13,024 acres of project lands
- Corps manages 1,380 acres
- 760-acre of lake surface (9.9 horsepower limit)

## Corps Managed Recreation:

- Upstream Recreation area
- Downstream Recreation Area
- Stowers Branch Beach and Picnic Area

## Outgrants and Lessees:

- WVDNR
  - Beech Fork State Park
  - Beech Fork Lake Wildlife Management Area

## Concessionaires:

- Marina





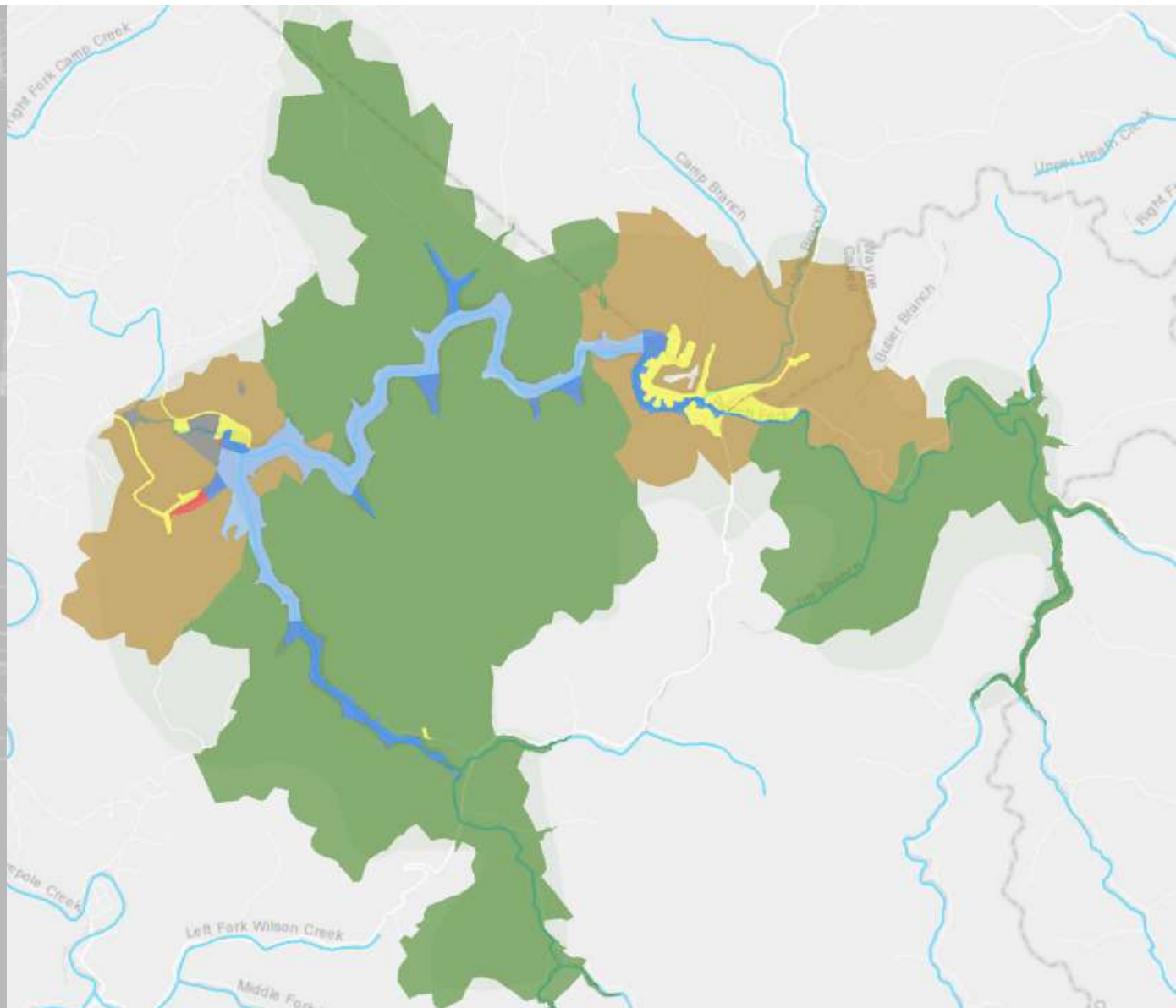
# BEECH FORK LAKE

## Land Classification

Land Classification	Area in Acres
Operations	56
High Density Rec	215
Low Density Rec	2,880
Wildlife Management	8,881
Open Rec – water	470
Restricted – water	12
No Wake - water	237



US Army Corps  
of Engineers



# EAST LYNN LAKE - OVERVIEW

## Description

- East Lynn Lake operation began in 1972 and is authorized for
  - Flood Control
  - Recreation
  - Fish and Wildlife Enhancement
- Corps owns 24,821 acres of land
- 1,005-acre lake surface (unlimited horsepower)



## Corps Managed Recreation:

- Dam Site
- Tailwater Area
- Overlook Area
- Laurel Creek Fishing Area
- East Fork Area
  - Swimming Beach
  - Boat Launch
  - Campground
- Lick Creek Area
- Lakeside Area

## Outgrants and Lessees:

- WVDNR
  - East Lynn Lake Wildlife Management Area

## Concessionaires and Subleases:

- Marina
- Campground Store & Rental

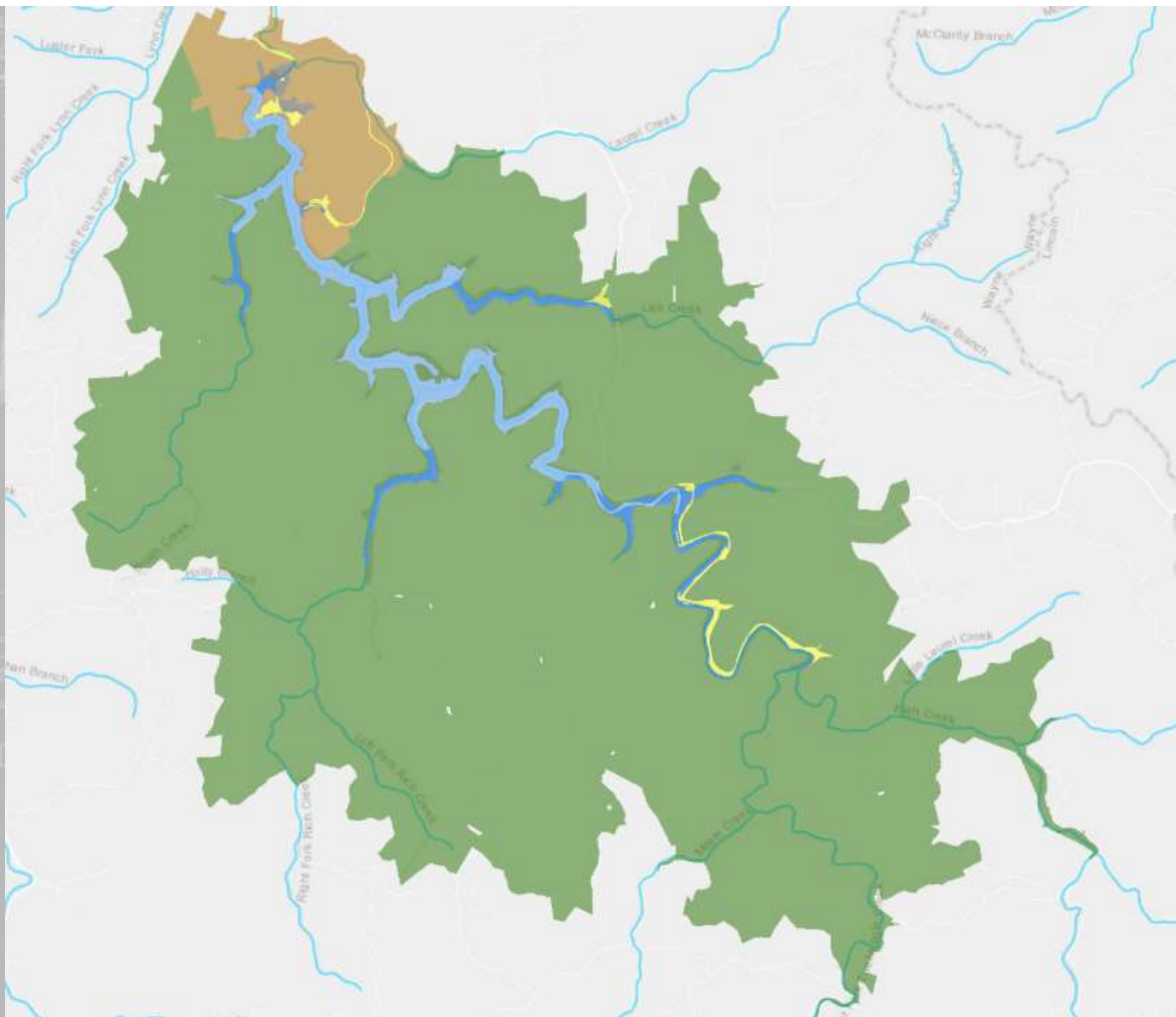
# EAST LYNN LAKE

## Land Classification

Land Classification	Area in Acres
Operations	48
High Density Rec	143
Low Density Rec	1,129
Wildlife Management	22,537
Open Rec – water	648
Restricted – water	1
No Wake - water	306



**US Army Corps  
of Engineers** ®





# WHAT ARE RESOURCE OBJECTIVES?

- Resource objectives address issues, needs, and opportunities.
- As part of this master plan regional and site-specific objectives have been drafted. Regional objectives are developed to look at how each project can contribute to the regional needs based on available resources.
- Clearly written statements that set forth measurable and attainable current and future management and development activities that support the stated goals of the Master Plan, Environmental Operating Principles and applicable national performance measures.
- They must be consistent with authorized project purposes, Federal laws and directives, regional needs, resource capabilities and takes public input into consideration.
- These objectives must maximize project benefits, meet public needs and foster environmental sustainability.



US Army Corps  
of Engineers

# REGIONAL RESOURCE OBJECTIVES FOR RECREATION

- Continue the Corps' legacy of providing quality access to recreation on public lands.
- Explore opportunities to expand trail use for a variety of recreation activities.
- Continue infrastructure upgrades as needed to accommodate modern recreational equipment, respond to recreational trends, and support evolving technologies to enhance user experience.
- Assess the need for rehabilitation or replacement of existing recreation facilities and prioritize needed improvements.
- Monitor the WV SCORP to ensure that the Corps is responsive to outdoor recreation trends, public needs, and resource protection within a regional framework.
- Evaluate broad alternatives to address large scale sedimentation problem areas.
- Evaluate opportunities for additional facilities or improved functionality to better accommodate non-motorized watercraft and other water-based recreation activities.



US Army Corps  
of Engineers

# REGIONAL OBJECTIVES FOR NATURAL AND CULTURAL RESOURCES

- Implement conservation and best management practices for pollinator health by preserving existing pollinator habitat and incorporating new habitat.
- Develop and implement an invasive species management plan for project lands.
- Continue to manage and provide natural, cultural, and recreation resources consistent with established land use practices and authorized project purposes, excluding the exploration or extraction of mineral, gas, or oil resources on project lands.
- Protect and/or restore important native habitats such as bottomland hardwoods, riparian zones, and wetlands.
- Perform surveys for prehistoric and historic sites periodically for both project areas.
- Evaluate the drift mines on project lands for their eligibility or potential eligibility for NR listing and for development of interpretive programs.



US Army Corps  
of Engineers



# BEECH FORK LAKE RESOURCE OBJECTIVES



US Army Corps  
of Engineers®

# BEECH FORK LAKE RECREATION RESOURCE OBJECTIVES

- Continue coordination with WVDNR Parks and other interested parties to meet lodging facility demand through the Report of Availability Real Estate request process.
- Identify and implement measures to reduce or eliminate vandalism.
- Investigate opportunities to increase public enjoyment, optimize efficiencies, and reduce congestion in public day use areas, including consideration of adding non-motorized watercraft launching areas.
- Pursue opportunities to expand Wi-Fi and cell phone coverage at Beech Fork Lake.
- Enhance trail accessibility, improve the existing trail system, and increase connectivity.



US Army Corps  
of Engineers

# BEECH FORK LAKE NATURAL AND CULTURAL RESOURCE OBJECTIVES

- Develop and implement a regular monitoring program to assess the spread of invasive species and subsequently implement control measures on Corps managed lands.
- Optimize partnerships for prevention and control of invasive species throughout project areas.
- Identify opportunities to minimize natural resource impacts due to routine maintenance.
- Finalize the 2001 draft Cultural Resource Management Plan for Beech Fork Lake.
- Perform a formal evaluation of eligible resources for National Register listing.
- Evaluate the log cabin relocated to the State Park campground for NR stature. In addition, a history of the log cabin should be prepared and used in the interpretation of the structure.



US Army Corps  
of Engineers



# BEECH FORK LAKE RESOURCE PLAN

- Management by area approach is utilized.
  - Divides entire project area into management areas that share facilities and management requirements.
  - Resource plan contains recommendations for future development and management of each management area.



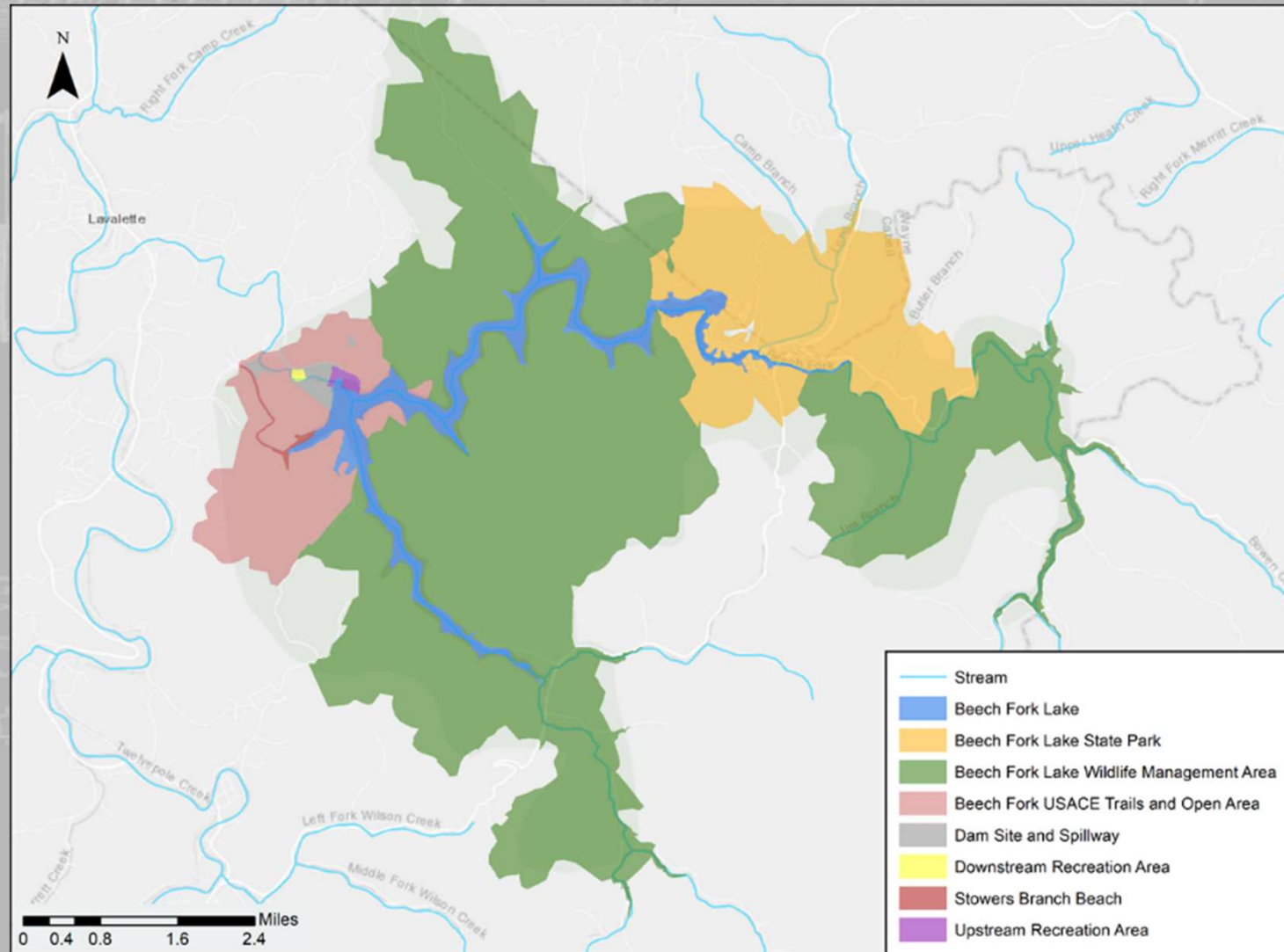
US Army Corps  
of Engineers

# BEECH FORK LAKE MANAGEMENT AREAS

- Beech Fork Lake
- Beech Fork State Park
- Beech Fork WMA
- Corps managed open area
- Dam Site and Spillway
- Downstream Rec Area
- Stowers Branch Beach
- Upstream Rec Area



**US Army Corps  
of Engineers**



# BEECH FORK LAKE - RESOURCE PLAN

## Beech Fork Lake Project

- Continue to pursue partnerships with other agencies and organizations for management of existing recreation facilities and development of new recreation opportunities.
- Implement an invasive species management plan to control the expansion of invasive species within project lands.
- Perform comprehensive surveys for prehistoric and historic cultural resource sites and develop a geospatial database for maintenance of such data.

## Beech Fork Lake

- Continue WVDNR's management of the fisheries in Beech Fork Lake with the goal of maintaining healthy and stable populations of native aquatic species, including sports fish.
- Continue the Corps' current management of the lake to maintain conditions for safe boating and swimming.



US Army Corps  
of Engineers



## Future Use

- Continue to operate and maintain the dam and outlet structures to meet the authorized project purposes.



US Army Corps  
of Engineers



## Upstream Future Use

- Evaluate alternatives for modifying the site layout to improve circulation.
- Explore opportunities for gateway improvements such as entrance road rehabilitation and adding natural areas (e.g., pollinator habitat).

## Upstream Recreation Area



## Downstream Recreation Area

## Downstream Future Use

- Enhance the visitor experience based on future analysis and evaluation of circulation and efficiency the area.



US Army Corps  
of Engineers



## Future Use

- Evaluate measures to improve utilization and recreation experience of visitors.
- Evaluate available options for reducing crime and vandalism.
- Evaluate potential options for expanding the trails, including multi-use trails.



US Army Corps  
of Engineers





# USACE Managed Open Lands

## Future Use

- Pursue options for expanding the existing trails to include opportunities for multi-use trails.
- Clear small areas along the lake's shoreline of vegetation so they are accessible by boaters for picnicking and observing nature.



US Army Corps  
of Engineers



## Potential future actions\*

- Pave 1.1 miles of the fitness trail and improve the kayak launch and upgrade the access and parking.
- Add interpretive signage for the Great Blue Heron Water Trail.
- Remove sediment from the lake area adjacent to the campgrounds to provide safe navigation.
- Coordinate with WVDNR to consider addition of new campsites and cabins at the campground.
- Perform a formal evaluation of the log cabin for National Register listing.
- Relocate a portion of the Mary Davis Trail away from hunting areas in WMA and private property.



\*This portion of the project is outgranted to the WVDNR Parks.



## Future Use

- Currently there are no proposed changes to the area. Continued management activities for the protection and enhancement of fish and wildlife habitat and to support use of the area for hunting and fishing will occur.



US Army Corps  
of Engineers

# EAST LYNN LAKE RESOURCE OBJECTIVES



US Army Corps  
of Engineers®

# EAST LYNN LAKE RECREATION RESOURCE OBJECTIVES

- Highlight unique characteristics at East Lynn Lake and promote awareness of recreation opportunities to increase visitation.
- Develop a strategy for discouraging use of off-road vehicles in unauthorized areas on project lands.
- Evaluate cost effective options for reducing trash in the lake.
- Pursue opportunities to expand Wi-Fi and cell phone coverage at East Lynn Lake.
- Evaluate opportunities to increase visitation and identify options for expanding recreational facilities at the Lakeside Day Use Area such as a new kayak launch or swimming beach.
- Improve accessibility to the Overlook Day Use Area Shelter



US Army Corps  
of Engineers



# EAST LYNN LAKE NATURAL AND CULTURAL RESOURCE OBJECTIVES

- Develop and implement a regular monitoring program to assess the spread of invasive species and subsequently implement control measures on Corps managed lands.
- Identify opportunities to minimize natural resource impacts due to routine maintenance.
- Expand the cultural history portion of the Historic Properties Management Plan for East Lynn Lake (1995) to include more specific information on the mining industry and potential historic resources within the project area.



US Army Corps  
of Engineers



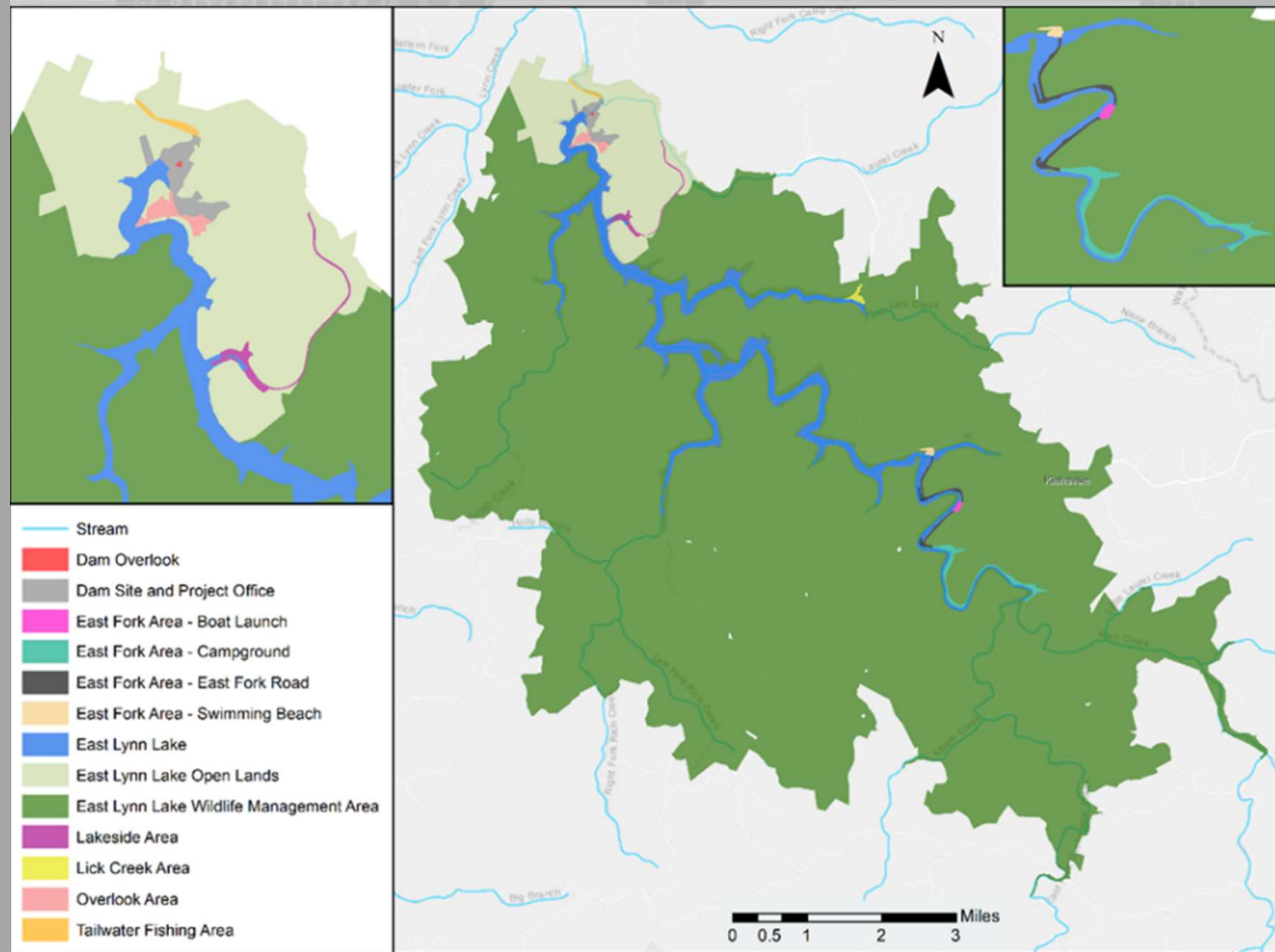
# EAST LYNN LAKE - RESOURCE PLAN



US Army Corps  
of Engineers®

# EAST LYNN LAKE MANAGEMENT AREAS

- East Lynn Lake
- Dam Overlook
- Dam Site & Project Off
- East Fork Area
  - Campground
  - Boat Launch
  - Beach
  - East Fork Road
- USACE Open Lands
- Lakeside Area
- Lick Creek Area
- Overlook Area
- Tailwater Fishing Area



# EAST LYNN LAKE - RESOURCE PLAN

## East Lynn Lake Project

- Implement an invasive species management plan to control the expansion of invasive species within project lands.
- Perform comprehensive surveys for prehistoric and historic cultural resource sites and develop a geospatial database for maintenance of such data.

## East Lynn Lake

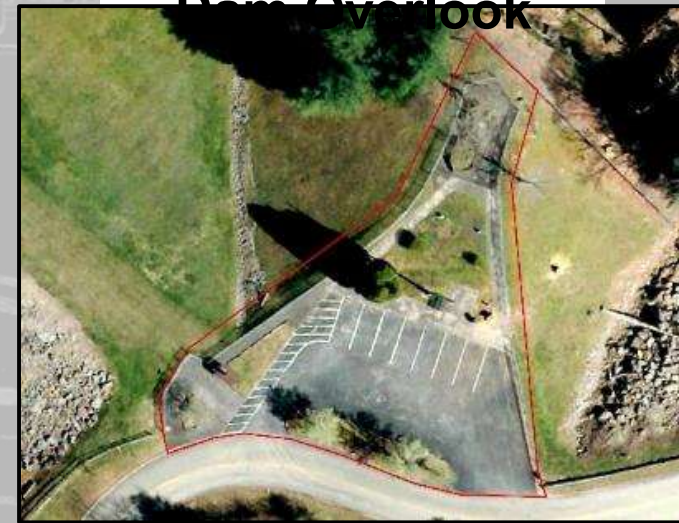
- Investigate and implement cost-effective options for reducing trash being flushed into the lake. If necessary, identify alternative funding sources or partnerships.
- Continue to identify and pursue methods for informing potential visitors of the recreation opportunities that are offered at East Lynn Lake to increase overall visitation.



US Army Corps  
of Engineers

## Future Use

- Continue current management of the site to provide visitors with a scenic overlook of the dam and lake.



US Army Corps  
of Engineers

**Dam Site and Project Office**



## Tailwater Fishing Area

### Future Use

- Replace the playground with upgraded equipment.



US Army Corps  
of Engineers



## Laurel Creek Fishing Area

### Future Use

- Pave the existing parking area including a section of pavement extending to near the East Fork to provide access for stocking trucks.
- Add a restroom for anglers.



US Army Corps  
of Engineers





# Future Use

- Evaluate the feasibility of adding another shelter.
- Expand and upgrade the playground.
- Evaluate measures to increase public safety when recreating in the sports fields area.



US Army Corps  
of Engineers







## Future Use

- Pursue opportunities to expand the trail system.



**Trails and Low-Density Recreation Area**



US Army Corps  
of Engineers



## Future Use

- Develop an interactive water feature.



US Army Corps  
of Engineers®

## Lick Creek Area

### Future Use

- Close the shelter, playground, and restroom.
- Provide signage at the boat launch informing the public of the agency site with the most current advisories for fish consumption.



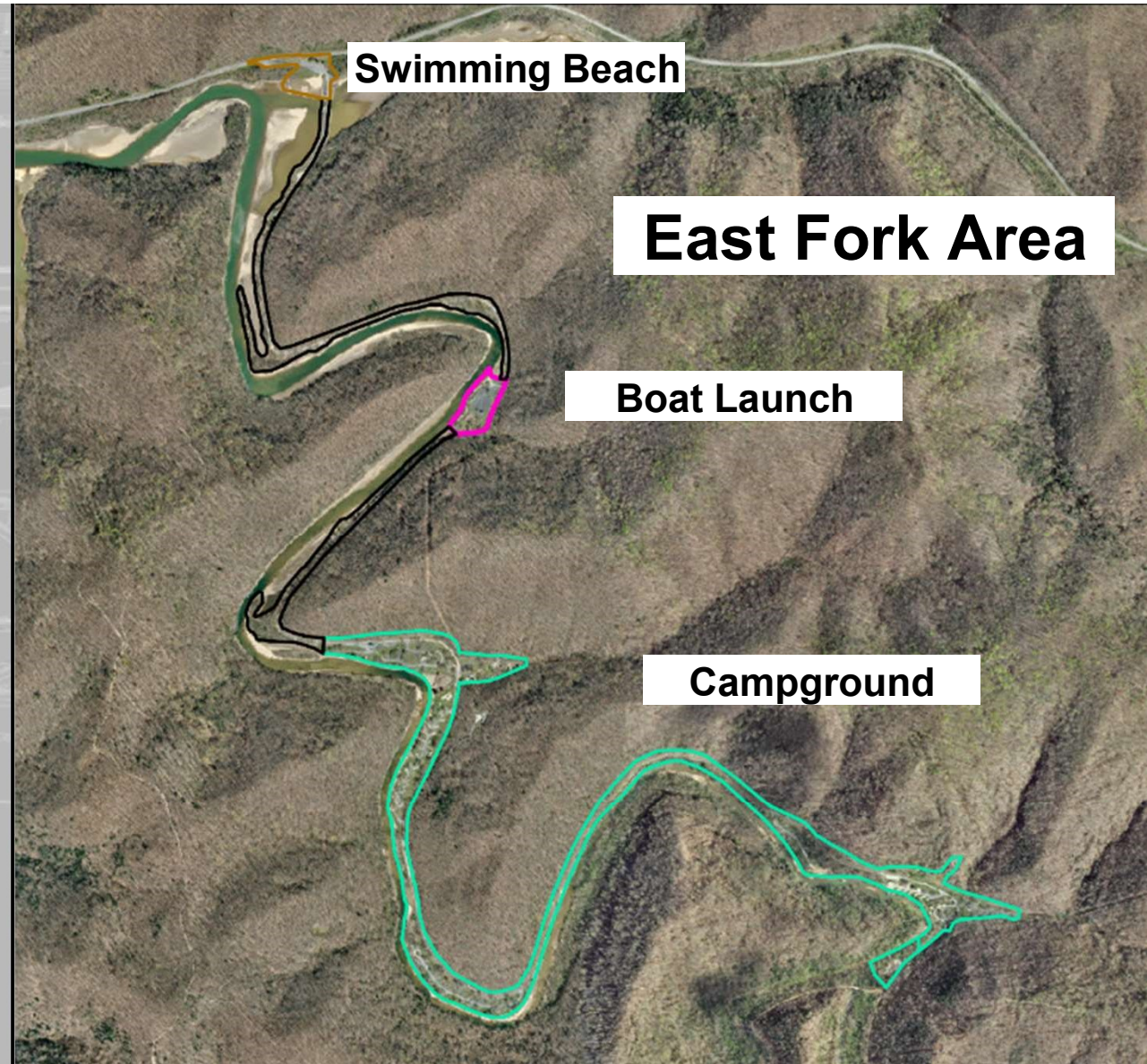
US Army Corps  
of Engineers





## Future Use

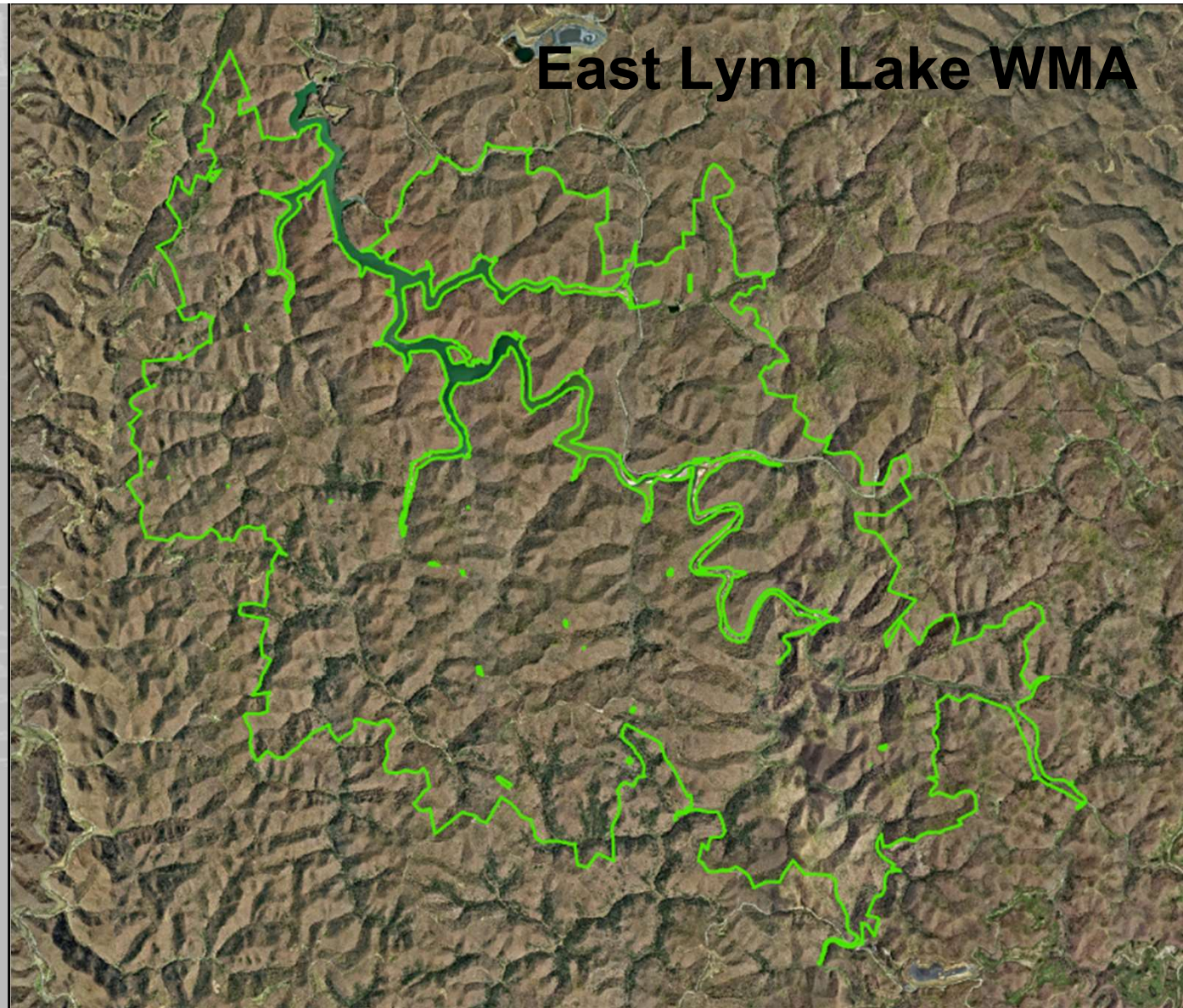
- Construct a pavilion for shade and a restroom at the East Fork Swimming Beach.
- Add a shelter and playground at the East Fork Boat Launch.
- Upgrade campsite electric hookups as needed at the campground.
- Evaluate the adequacy of existing campsite pads and make improvements as needed to better accommodate modern recreational vehicles.
- Add a dump station at the East Fork Campground.





## Future Use

- Currently there are no proposed changes to the area. Continued management activities for the protection and enhancement of fish and wildlife habitat and to support use of the area for hunting and fishing will occur.
- USACE and WVDNR-Wildlife will continue to collaborate and explore methods for controlling illegal off-road vehicle access.





# PLANNING PROCESS SCHEDULE

- ✓ January 26, 2021 – Public and Stakeholder Scoping Meetings
- October 5, 2021 – Public and Stakeholder Progress Meetings
- November 2021 - Draft Regional Master Plan
- December 2021 – Final Regional Master Plan



US Army Corps  
of Engineers

# HOW CAN I PARTICIPATE?

- Review draft resource objectives and plan are available at:

<https://www.lrh.usace.army.mil/Missions/Civil-Works/Current-Projects/BeechFork-EastLynn-Lakes-Regional-Master-Plan/>

- Email:  
[BeechForkEastLynnMP@USACE.ARMY.MIL](mailto:BeechForkEastLynnMP@USACE.ARMY.MIL)

- Submit written comments to:

US Army Corps of Engineers  
ATTN: Rebecca Rutherford  
502 Eighth Street  
Huntington, WV 25701



US Army Corps  
of Engineers



# WHO CAN I TALK TO ABOUT THE REGIONAL MASTER PLAN?

Ashley Stephens; Master Plan Project Manager

[Ashley.L.Stephens@usace.army.mil](mailto:Ashley.L.Stephens@usace.army.mil)

Work Phone: 304.399.5947

Beech Fork and East Lynn Lakes Regional Master Plan Website:

<https://www.lrh.usace.army.mil/Missions/Civil-Works/Current-Projects/BeechFork-EastLynn-Lakes-Regional-Master-Plan/>



US Army Corps  
of Engineers